

ChelinoBaby®

Stores:ChelinoBaby – Ormonde – JHB
ChelinoBaby – Fourways – JHB
ChelinoBaby – Greenstone – JHB
ChelinoBaby – Menlyn – Pretoria
ChelinoBaby – Kolonnade – Pretoria
ChelinoBaby – Centurion – Pretoria
ChelinoBaby – Gateway – Durban
ChelinoBaby – Online – www.chelinobaby.co.za



Imported for :

ChelinoBaby Group of Companies.

No. 12 Kimberlite Road , Theta Ext 5 , Booyens Reserve ,
JHB , 2091. SA.

Tel: +2711 8352520

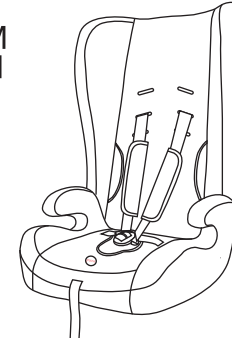
Info: info@chelino.co.za

Chelino

REVO

SUITABLE FROM
9 TO 36 KG Child

9 months to 11 years old approx



INSTRUCTIONS FOR USE CHILD CAR SEAT GROUP I/II/III

NOTICE

- 1.This is a “Universal” child restraint; it is approved to Regulation No.44,04 series amendments, for general use in vehicles and it will fit most, but not all, car seats.
- 2.A correct fit is likely if the vehicle manufacturer has declared in the vehicle handbook that the vehicle is capable of accepting a “Universal” child restraint for this age group.
- 3.This child restraint has been classified as “Universal” under more stringent conditions than those which applied to earlier designs which do not carry this notice.
- 4.If in doubt, consult either the child restraint manufacturer or the retailer.

Only suitable if the approved vehicles are fitted with 3-point safety-belts, approved to UN/ECE Regulation No.16 or other equivalent standards.

Do not use in passenger seats equipped with airbags(SRS).

NOTES

Please read through these instructions carefully before using the child car seat for the first time. The instructions can be retained on the child car seat for its life period in the case of built-in restraints, and take good care of it for reference in the future.

1.1 Applicability:

The child car seat is suitable for group I/II/III(9 TO 36KG)

Group I : 9-18kg

Group II : 15-25kg

Group III : 22-36kg

This child car seat can be used with its harness system for children of group I.It must be secured with the belt fastener on the 3-point vehicle belt.

For children of group II and III (15kg to 36kg) the harness system must be removed and the vehicle's 3-point belt system be used to secure the child.

SAFETY WARNINGS

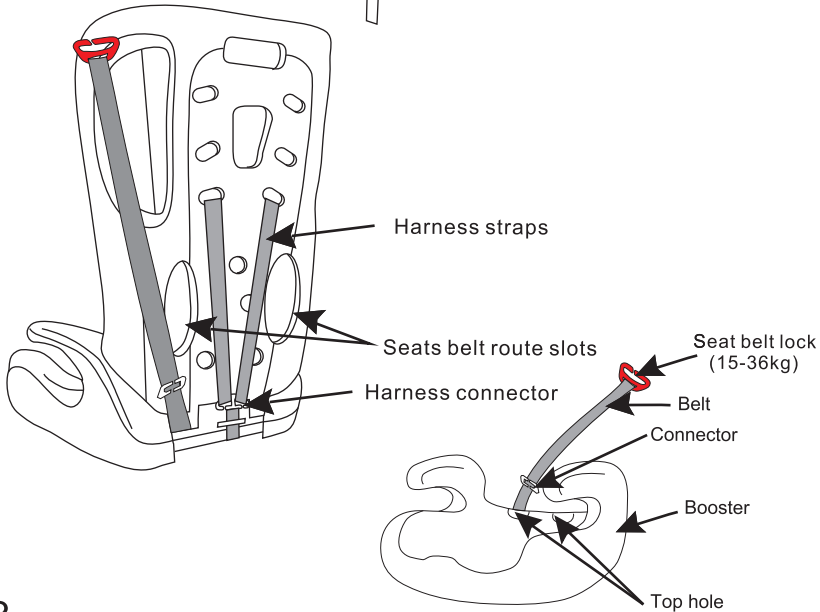
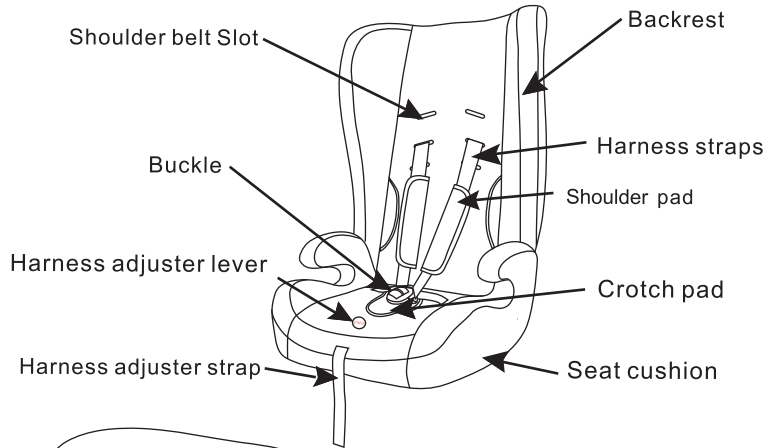


Please read this user guide carefully before install the child seat and for future reference.

DO NOT USE THIS CHILD SEAT IN PASSENGER SEATS EQUIPPED WITH AIRBAGS.

- This child seat can be used with the harness for children of 9 to 18kg in weight (group I).
- This child seat can be used without the harness for children of 15 to 36kg in weight (group II,III).
- Both the above must be used in conjunction with the motor vehicles 3 point safety harness.
- This child seat can only be installed forward facing using a three-point lap and diagonal seat belt.
- Do not use this child seat in the home. It has not been designed for home use and should only be used in your car.
- This safest seating position for this child car seat is on the rear seat of a vehicle.
- Never use the child seat without fastening it into the car.
- It is dangerous to make any alteration or additions to the device without the approval of the component authority, and a danger of not following closely the installation instructions provided by the child restraint manufacturer.
- Do not leave your child unattended in the seat at any time.
- The seat should be kept away from sunlight if the seat is not provided with a textile, otherwise it may be too hot for the child's skin.
- In the event of an emergency it is important that the child can be released quickly. This means that the buckle is not fully tamper proof and so your child must be taught never to play with the buckle.
- Any luggage or other objects liable to cause injuries in the event of a collision should be properly secured.
- Periodically inspect the harness for wear, paying particular attention to attachment points. Sitting and adjusting devices.
- Always make sure that any straps holding the seat restraint to the vehicle shall be tight, any straps restraining the child should be adjusted to the child's body, and check that the straps shall not be twisted.
- Ensuring that any lap straps is worn low down,so that the pelvis is firmly engaged, shall be stressed.
- The seat device should be changed when it has been subject to violent stresses in an accident.
- The instruction can be retrained on the child restraint for its life.
- Do not use any load bearing contact points other than those described in the instructions and marked in the child restraint.
- Store this child seat in a safe place when it is not being used. Avoid placing heavy objects on top of it. Do not allow your child seat to come into contact with corrosive substances e.g. Battery acid.
- The child restraint must not be used without the cover. The seat cover should not be replaced with any other than the one recommended by the manufacturer, because the cover constitutes an integral part of the restraint performance.

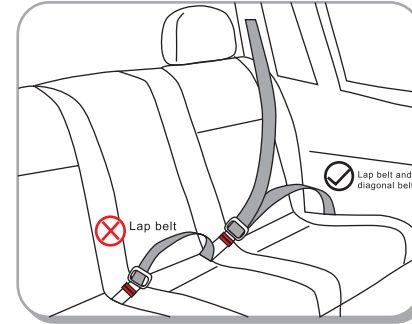
Features



Vehicle application

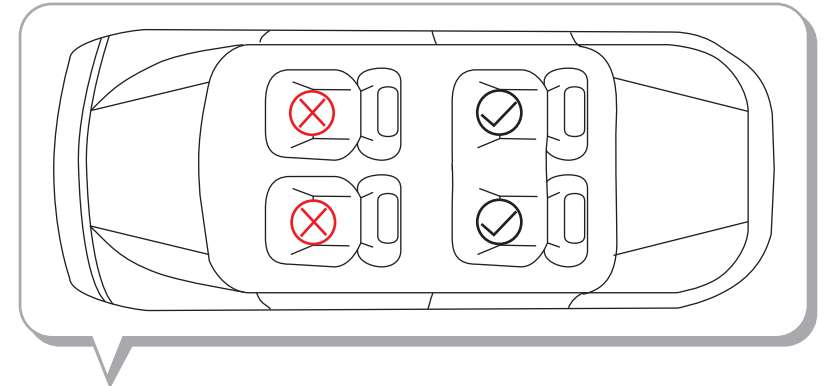
Correct fitting/suitable

Incorrect fitting/not suitable



This child seat is suitable for conventional use in all cars equipped with 3-point seat belts that are fitted in accordance with European standard (ECE44 or equivalent standard)

Important:
This child seat must only be installed using a lap and diagonal seat belt.



Forward facing on the rear seat .

USAGE FOR THE AGE GROUP I

Use of the harness system is only permitted for children of age group I ,which means from 9kg to 18kg.

Adjusting the shoulder height(group I)

The straps should go into the slots at, or the nearest slots above the height of the child's shoulders. Remove straps by passing them through the slots from the front to the back of the car seat to adjust the harness: re-route the straps through the appropriate slots.



NO-Too low

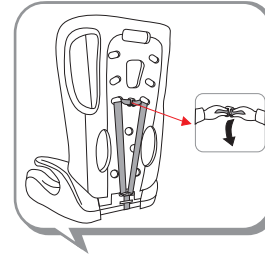


NO-Too high

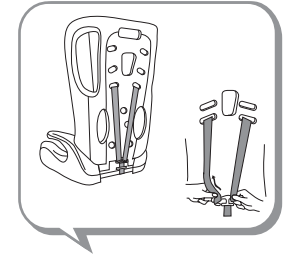


Yes -Correct

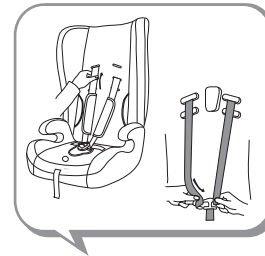
If the height of your shoulder belts in child car seat is not fit for your child, adjust the height of the shoulder belts, please proceed as follows:



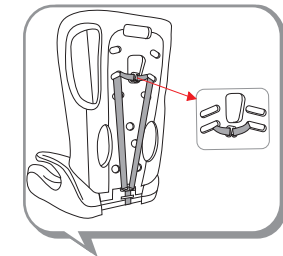
Step1.Looseen the shoulder harness (see point 4.3). Turn the child seat to the back,Slide the chest belt off the harness connector.



Step2.Slide both of the shoulder harness off the harness connector.

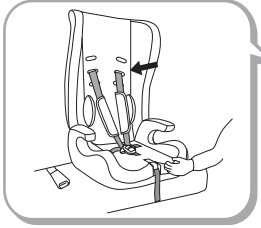


Step3.Now thread the small belts of the chest pads and harness into the corresponding belt slots. Slide the harness straps in the harness connector.

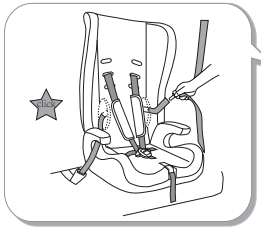


Step4.Slide both of the chest pads in the chest pad connector(Fig.4). Ensure that both of the shoulder belts and chest belt go through slots at the same height, and not twisted.

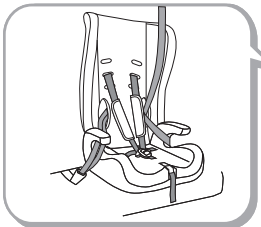
Securing the child car seat(group I)



Step1.Place the child safety seat on the vehicle's seat which is fitted with 3-point safety belts, ensuring it is firmly pressed against the car seat's backrest.



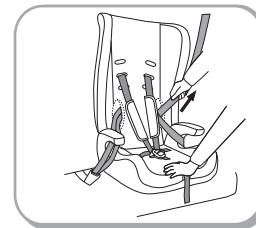
Step2.Pull out the vehicle belt, thread the belt tongue (incl. Vehicle belt)through the adult belt route slot to the rear and through the back rest, through the other adult belt route slot(on the buckle side), and allow it to lock in place. You will hear“click”.



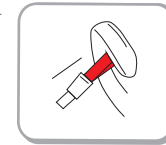
Step3.Place the vehicle lap belt under the arm rest.
Note:Pull the vehicle diagonal belt on the vehicle buckle side through the car seat belt route slot and the vehicle diagonal belt and the vehicle lap belt under the other side of the arm rest.Make sure adult belt has not become twisted.



Step4.Press your knee on the child car seat and pull the diagonal belt along the direction as the picture shows. Make sure that belt has not loosened.



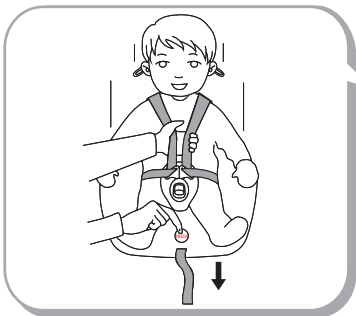
Step5. Tighten the diagonal shoulder belt in the direction of the automatic roll-up as possible until there is no slack and the seat is held firmly in place. Main load point must be up car seat buckle. The satisfactory position of the adult safety-belt buckle relative to the child car seat is as the following picture. If in doubt, please contact us.



To release your child seat following the above instructions in reverse order.

Ensure that each part of the belt is tightened as possible. Make sure all the belts position is right and has not become twisted. Also check that the cover is not impeding the movement or fit of the belt webbing in any way.

Loosening the shoulder straps



Step1. The shoulder straps are slacked by pressing the lever (under the car seat cover) on the front of the car seat.
Step2. Press down on the label marked "Press" as you grip the two shoulder straps with your other hand. Pull the shoulder straps towards you to loosen it.

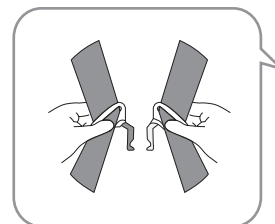
Securing the child with the harness



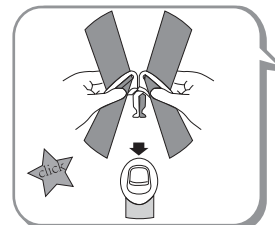
Firstly, adjust the shoulder belts height (see point 4.1), proceed as follows:
Step1. Loosen the harness (see point 4.3), open the buckle (see point 4.4.1), and place them down sideways.
Step2. Seat your child in the child car seat. Place both shoulder belts over your child's shoulders. Fasten the buckle (see point 4.4.1).
Step3. Pull the shoulder straps upwards to remove the slack from the lap sections of the harness then pull the adjuster strap until the harness is fully tightened (see left picture).

The harness should be adjusted as tightly as possible without causing discomfort to your child. A loose harness can be dangerous. Check the harness adjustment and tighten each time the child is placed in the seat. Ensure that any lap strap is worn low down, so that the pelvis is firmly engaged, the belt is not twisted.

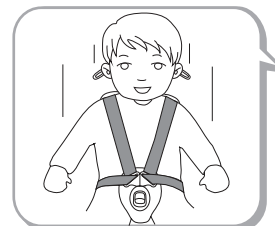
Using the buckle



Step1. Put the two metal sections of the buckle connectors together.



Step2. Slot the two buckle connectors into the slot in the top of the buckle until they "click" into place.



Step3. Check the harness is correctly locked by pulling the shoulder straps upwards.

To release the harness, press the red button on the buckle downwards.

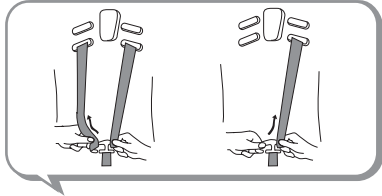
USAGE FOR THE AGE GROUP II /III

The harness system must be removed from the seat when used for these age group II,III, which means from 15kg to 36kg. Only the 3-point vehicle belt system can be used to buckle up the child car seat.

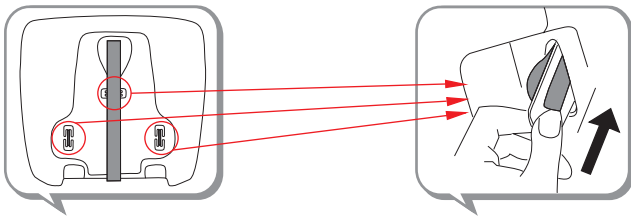


Removal of the harness

Step1. Loosening the harness(see point4.), turn the seat to the back
Step2.Slide both of the harness straps off the harness connector



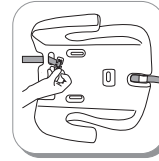
Step3. Slide the belt of the chest pads off the chest pad connector
Step4.Pull the strap till the steel pole gets out of the slot Now you can remove the belts as well as the tongue in an upwards direction.



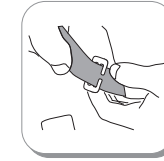
Installation of the harness is carried out in reverse order to removal.
Keep harness with all parts in a safe place, to use in the future.

Install and adjust the belt lock system

belt lock system includes red belt lock, belt, connector Install the belt lock system
Pull the belt one side fixed connector through one top hole of the base(see picture1) ,
slide the belt into the hook of the connector (see picture 2,3,4,5).



Picture1



Picture2



Picture3



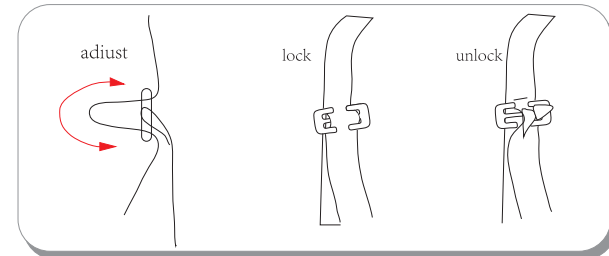
Picture5



Picture6

Releasing the belt is carried out in reverse order to removal. Note: For group II,the bottom belt of belt lock system is fixed into the top hole which is far away from the car seat buckle. For group III,the bottom belt of belt lock system is fixed into the top hole which is near to the car seat buckle.

Adjust the belt length as the picture,just make belt lie on child shoulder ,please see the following picture .

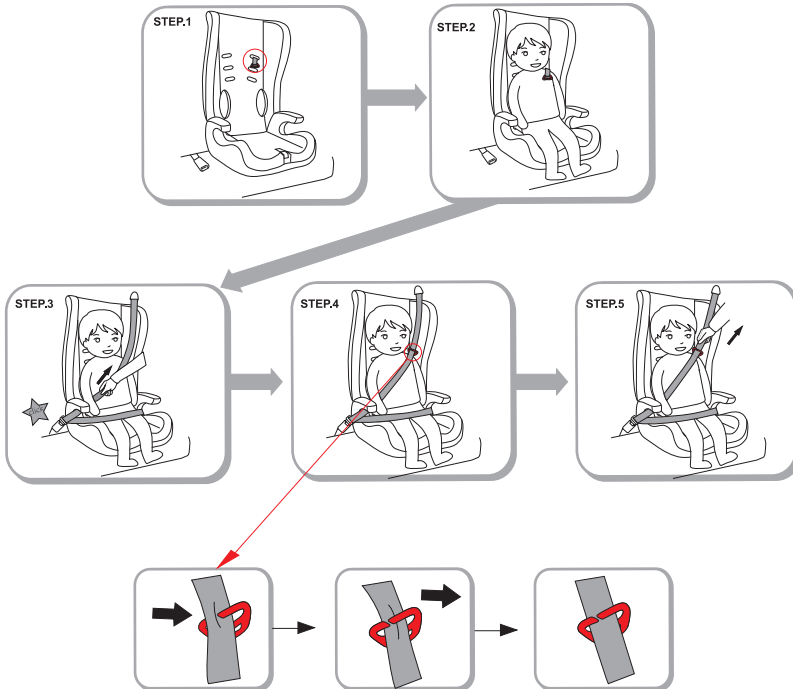


Securing the child car seat with vehicle's belt with belt lock for group II from 3 to 7years (15-25kg)

The car seat must be used vehicle's 3-point belt system for children of the age groups II (15kg-36kg). The harness system must be removed from the seat (see point 5.1).



Securing the child car seat with backrest and belt lock (group II)



IMPORTANT: Before fitting the seat, remove the shoulder straps, crotch strap and then fit the seat belt lock only in upper 2 row slots as shown.

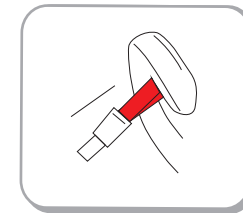
Step1. Thread the belt lock (with belt) into the proper slot which is nearest to the top of child shoulder on the side of the car belt automatic roll-up device. Pull the belt lock from back side of child seat to its face side.

Step2. Place the child safety seat on the vehicle's seat ensuring it is firmly pressed against the car seat's backrest. Seat your child in the child car seat.

Step3. Pull out the 3-point vehicle belt and place the lap belt on the opposite side of the buckle under the arm rest.(Make sure that the diagonal belt and the lap belt on the buckle side are under the armrest). And allow it to the buckle in place. You will hear "click".

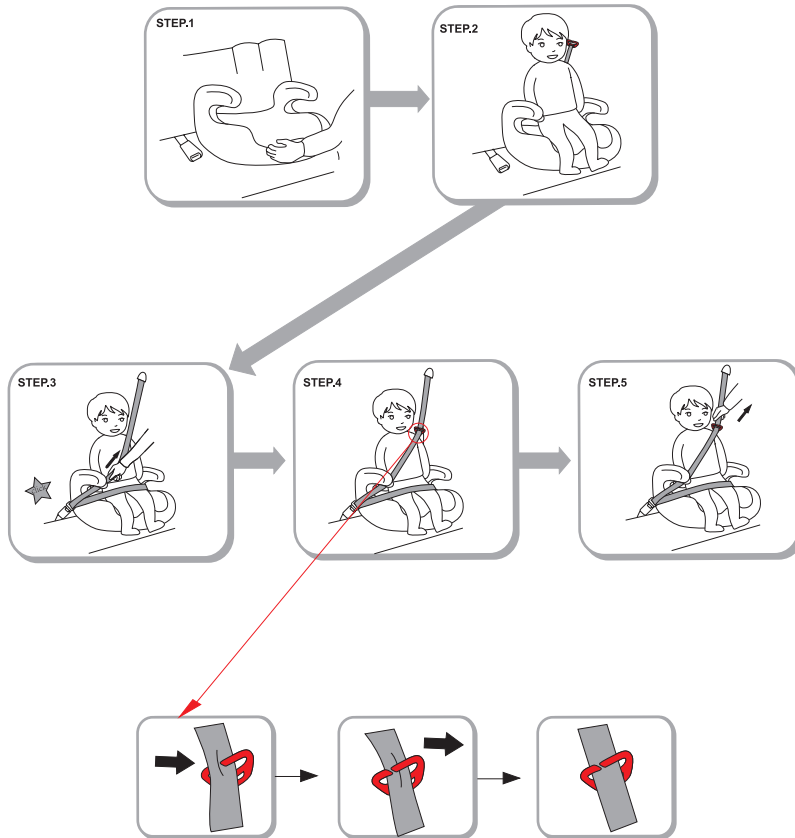
Step4. Place the diagonal belt goes through the belt lock . Make sure that the belt is not twisted. Note :choose the hole nearest to child shoulder to guide the belt lock.

Step5.Tighten the adult belts and the diagonal shoulder belt in the direction of the automatic roll-up as possible. Pull the strap in the front of child safety seat to adjust anger of the diagonal shoulder belt.All the belts should be adjusted as tightly as possible without causing discomfort to your child.Main load point must be up car seat buckle.The satisfactory position of the adult safety-belt buckle relative to the child car seat is as the following picture(Fig. 6).You can contact us if in doubt about this point.



Securing the child car seat with vehicle's belt with belt lock for group III from 7 to 11 years (22-36kg)

IMPORTANT: Before fitting the seat, remove the shoulder straps, crotch strap and backrest.



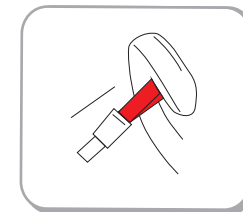
Step1. Place the child safety seat on the vehicle's seat ensuring it is firmly pressed against the car seat's backrest. Seat your child in the child car seat.

Step 2. Place the child on the safety seat. Guide the belt lock (with belt) to child shoulder which is near to car belt automatic roll-up device. Pull the belt lock from back side of child to child's face side. The strap lies on the middle of child's shoulder. Step3. Pull out the 3-point vehicle belt and place the lap belt on the opposite side of the buckle under the arm rest. (Make sure that the diagonal belt and the lap belt on the buckle side are under the armrest). And allow it to the buckle in place. You will hear "click".

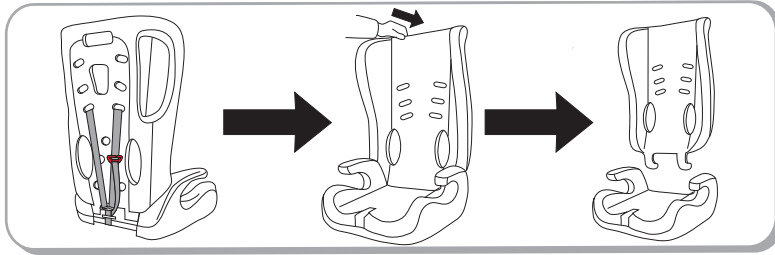
Step4. Place the diagonal belt goes through the belt lock. Adjust the length of the belt and make sure the strap lies on the middle of shoulder. Don't too close to neck and shoulder side edge. Make sure that the belt is not twisted.

Step5. Tighten the adult belts and the diagonal shoulder belt in the direction of the automatic roll-up as possible. Pull the strap in the front of child safety seat to adjust angle of the diagonal shoulder belt. All the belts should be adjusted as tightly as possible without causing discomfort to your child.

Main load point must be up car seat buckle. The satisfactory position of the adult safety-belt buckle relative to the child car seat is as the following picture. You can contact us if in doubt about this point.



CARE INSTRUCTIONS



Removing/replacing the cover

Step1. Remove the belt system as described in point5.1

Step2.Remove the plastic pins from the back side of backrest(see above picture). Then press the backrest so far back so that it rests flat on the floor. Now you can remove the cover of backrest.

Step3.Remove the backrest. Now the seat cushion cover can be pulled forward and removed.

To replace the cover proceed in the reverse order to removing the cover.

Cleaning the car seat and cover

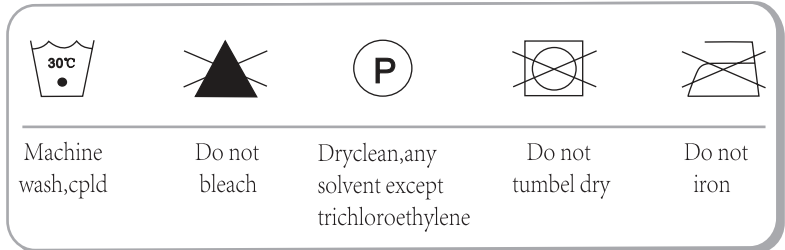
The seat cover, harness and plastic parts can be washed with very mild detergent and Warm water.

Do not use chemical cleansers, bleach or corrosives to wash any part of the car seat.

Do not wash by machine,Spin-dry are not recommended.

Washing instruction:

The cover is removable and washable at 30°C,line dry only.



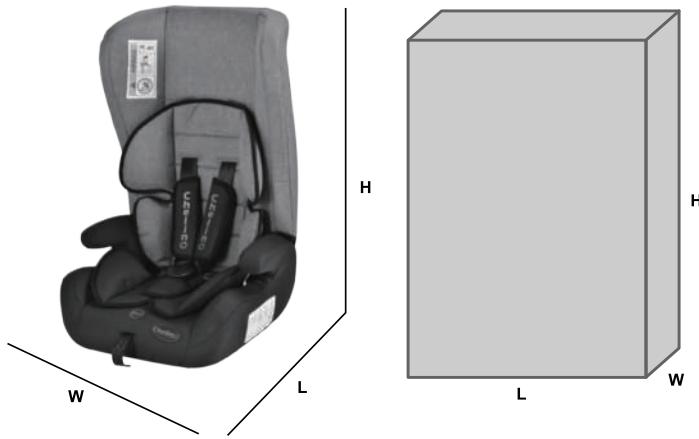
PROCEDURE AFTER AN ACCIDENT

The child car seat must be replaced when it has been subject to violent stresses in an accident.

PRODUCT STERVICE

If you are in doubt about using or fitting of this product or you require any replacement parts, please contact either the child restraint manufacturer or the retailer.

DIMENSION INFO



LENGTH	47 CM	CARTON LENGTH	77 CM
WIDTH	46 CM	CARTON WIDTH	46 CM
HEIGHT	70 CM	CARTON HEIGHT	88 CM

WEIGHT 5 KGS